

ACTUATOR LA23

Features:

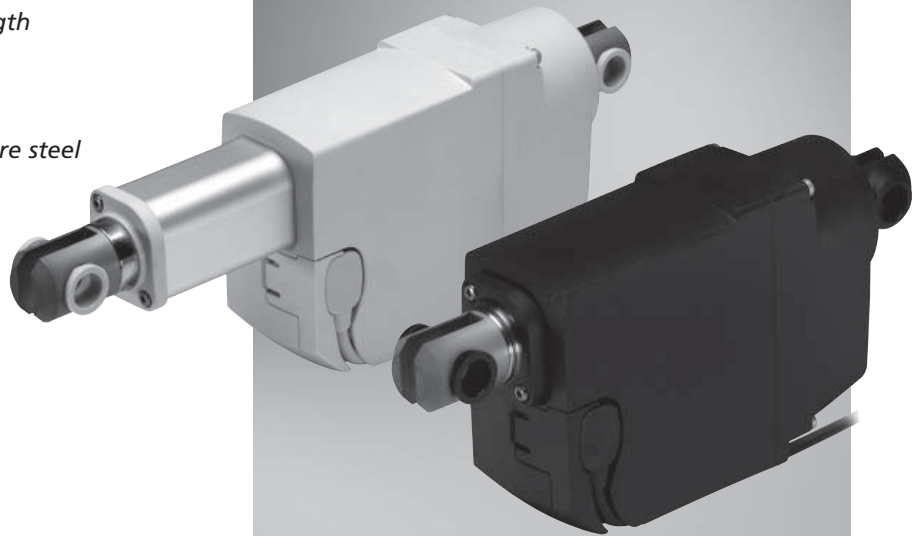
- *Up to 2500 N in push or pull*
- *Compact design: width 43 mm and built-in dimensions 110 mm + stroke length (standard version)*
- *Black housing*
- *IPX4*
- *Plastic back fixture (2500 N require steel back fixture)*
- *Guided nut*
- *24 V motor*
- *20 - 300 mm stroke*
- *Built-in electrical end stop*
- *Exchangeable cable*

Options:

- *Safety nut in push or pull*
- *Light grey housing (RAL 7035)*
- *Potential free end stop signals*
- *Steel back fixture*
- *12V motor*

Usage:

- *Usage temperature -30°C to +55°C*
- *Duty cycle: 10%, 2 minutes driving followed by 18 minutes pause*
- *Will be approved according to DSIEN60601-1 and UL60601-1 (Approvals not final yet)*
- *Will be approved and tested to run with:
OpenBus™: CB20, CB16, CB6S,
JUMBO: CBJ1/2, CBJC and CBJH*
- *Static safety factor of 2.5*



The LA23 actuator is a small and strong push or pull actuator (up to 2500 N). The LA23 can be used in various applications where size is important.

Some of the benefits the LA23 offers you are:

- Compact design
- High lifting force
- Exchangeable cables

The standard LA23 is available for both the CARELINE®, MEDLINE® and TECHLINE™ product ranges.

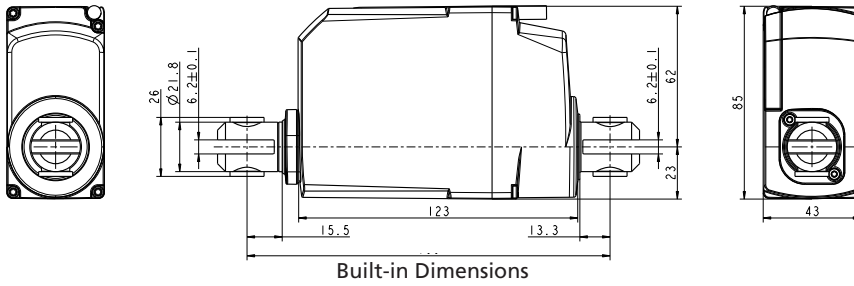
LA23

Ordering example:

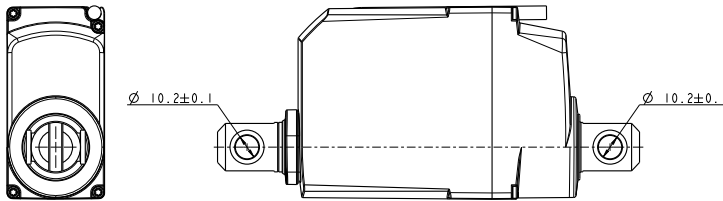
23 6 1 A 0 1 0 00 250 A 4

23	6	1	A	0	1	0	00	250	A	4		
											IP degree:	4 = IPX4
											Motortype:	A = 12V B = 24V (Running mainly with battery (CBJ1, CBJ2, CBJH, CBJC, wheelchairs)) G = 24V (For OpenBus (CB20, CB16, CB6s))
											Stroke:	XXX = mm Min. 020 mm, Max. 300 mm Standard versions: 020 mm 050 mm 100 mm 150 mm 200 mm 250 mm 300 mm
											Positioning:	00 = No positioning 01 = Potential free end stop signals 02 = Standard dual hall positioning
											Safety option:	0 = No safety options (pitch 3, 6 or 9) 1 = Safety nut for push (pitch 3, 6 or 9) 2 = Safety nut for pull (pitch 6 or 9)
											Housing colour:	1 = Black (RAL 9005) 2 = Light grey (RAL7035)
											Piston rod eye:	0 = Standard (steel) with slot (6.1 mm), eye Ø10.1 mm, incl. plastic bushings 1 = Standard (steel) with slot (6.1 mm), eye Ø10.1 mm, excl. plastic bushings
											Back fixture rotation:	0 = 0° clockwise A = 7.5° clockwise B = 15° clockwise C = 22.5° clockwise D = 30° clockwise E = 37.5° clockwise F = 45° clockwise G = 52.5° clockwise H = 60° clockwise J = 67.5° clockwise K = 75° clockwise L = 82.5° clockwise 1 = 90° clockwise M = 97.5° clockwise N = 105° clockwise P = 112.5° clockwise Q = 120° clockwise R = 127.5° clockwise S = 135° clockwise T = 142.5° clockwise U = 150° clockwise V = 157.5° clockwise W = 165° clockwise Z = 172.5° clockwise
											Back fixture:	1 = Plastic with slot (6.1 mm), eye Ø10.1. (only for pitch 6 or 9 and safety option 0 or 1 (push)) 2 = Steel with slot (6.1 mm), eye Ø10.1 mm, incl. plastic bushings (pitch 3, 6 or 9) 3 = Steel with slot (6.1 mm), eye Ø10.1 mm, excl. plastic bushings (pitch 3, 6 or 9)
											Spindletype:	3 = 3 mm pitch (2500 N) 6 = 6 mm pitch (1500 N) 9 = 9 mm pitch (1200 N)
											Actuator type:	23 = LA23

Dimensions:



Back fixture orientation
Option 1



Back fixture orientation
Option 0

The built-in dimensions depend upon the chosen safety option and the stroke length.
Please see the information below:

	Built-in dimensions 3 mm pitch	Built-in dimensions 6 and 9 mm pitch
Stroke length 20 mm:	168 mm	160 mm
Stroke length 50-200 mm:	Stroke + 118 mm	Stroke + 110 mm
Stroke length 200-300 mm:	Stroke + 138 mm	Stroke + 130 mm
Safety nut in push: no add in built-in dimensions		
Safety nut in pull: add 12 mm in built-in dimensions		

Technical specifications:

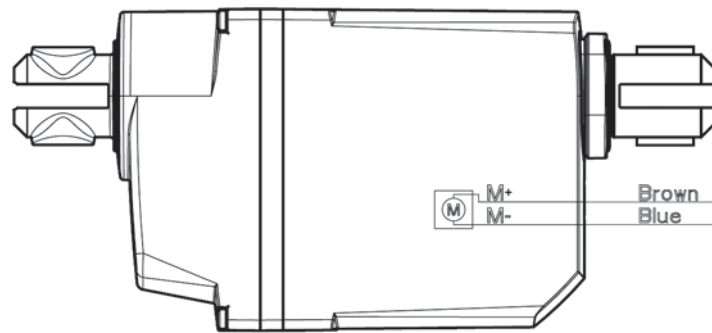
Power supply	Spindle pitch (mm)	Load max. Push or Pull (N)	Motor type	Speed at 0/ full load (mm/sec.)	Current at 0/ full load (Amp.)
12VDC	3	2500/2500	A: 12V	3.1 / 2.3	0.6 / 3.3
CBJ1/2, CBJH and CBJC	3	2500/2500	B: 24V	3.2 / 2.5	0.3 / 1.8
OpenBus	3	2500/2500	G: 24V	3.2 / 2.7	0.2 / 1.2
12VDC	6	1500/1500	A: 12V	6.2 / 4.6	0.8 / 3.6
CBJ1/2, CBJH and CBJC	6	1500/1500	B: 24V	6.4 / 5.5	0.3 / 1.5
Openbus	6	1500/1500	G: 24V	6.3 / 5.5	0.2 / 1.1
12VDC	9	1200/1200	A: 12V	9.3 / 6.8	0.7 / 3.8
CBJ1/2, CBJH and CBJC	9	1200/1200	B: 24V	9.4 / 8.2	0.4 / 1.9
OpenBus	9	1200/ 1200	G: 24V	9.2 / 8.2	0.2 / 1.1

Cables for LA23:

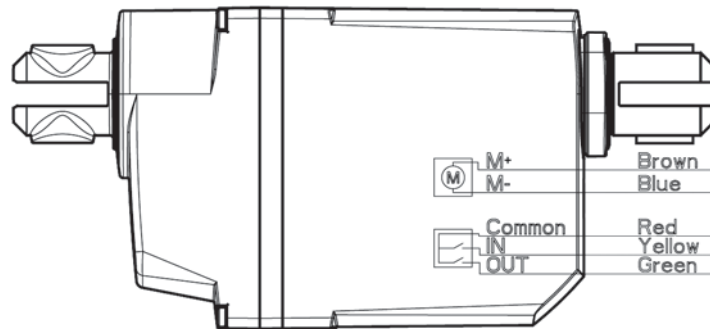
Item number	Poles	Plug types	Colour	To use with (CB)
0237002-1500	6 poles	Microfit - open end	Black	Not LINAK CB's
0237002-2500	6 poles	Microfit - open end	Black	Not LINAK CB's
0237002-5000	6 poles	Microfit - open end	Black	Not LINAK CB's
0237003-0750	6 poles	Microfit - minifit	Light grey	CB20, CB6S, CB16, CBJH
0237003-1500	6 poles	Microfit - minifit	Light grey	CB20, CB6S, CB16, CBJH
0237003-2250	6 poles	Microfit - minifit	Light grey	CB20, CB6S, CB16, CBJH
0237004-0750	6 poles	Microfit - Jack	Light grey	CBJ1, CBJ2, CBJC
0237004-1250	6 poles	Microfit - Jack	Light grey	CBJ1, CBJ2, CBJC

Connection diagrams:

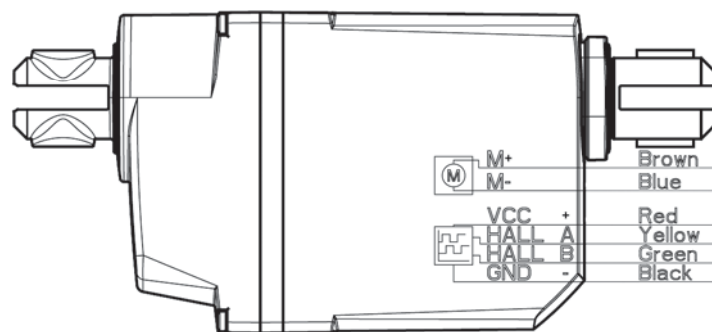
Basic LA23
LA23XXXXXX00XXXXX



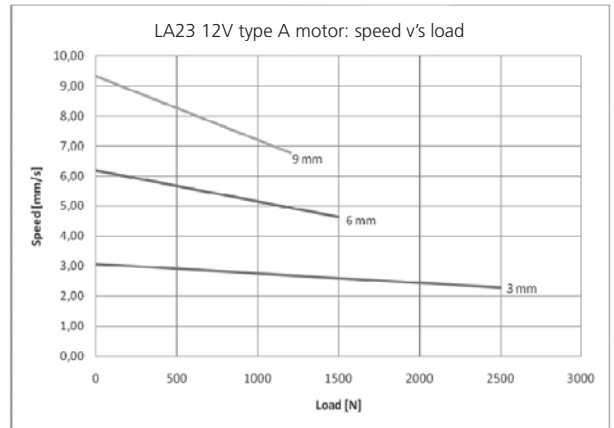
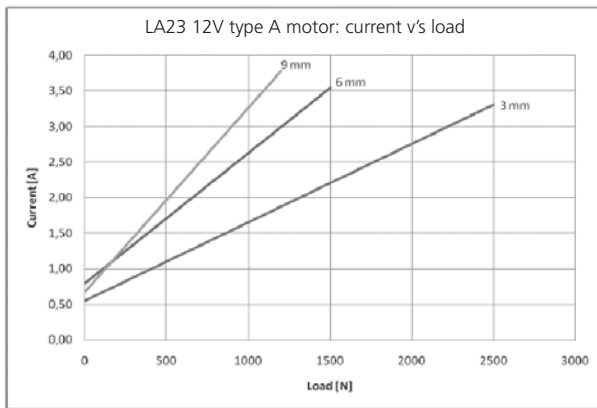
LA23 with potential free end stop
LA23XXXXXX01XXXXX



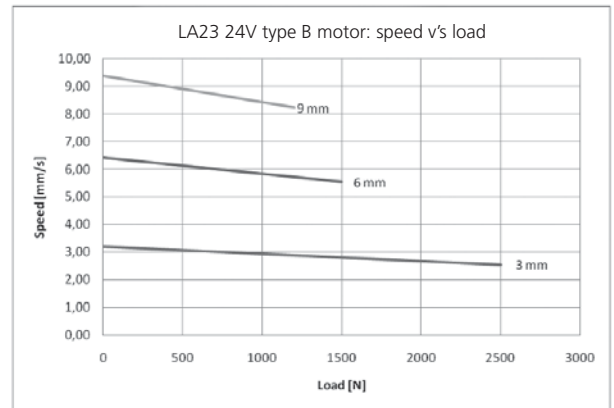
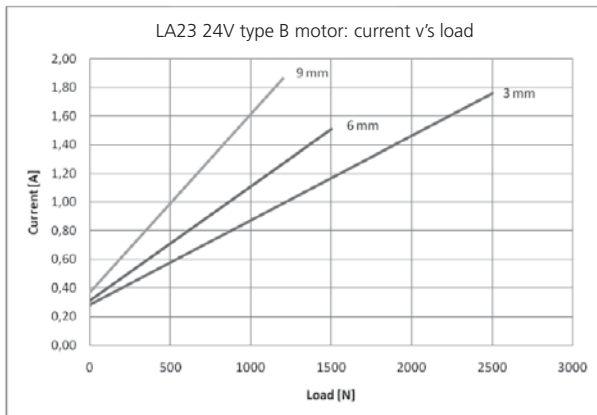
LA23 with standard dual hall
LA23XXXXXX02XXXXX



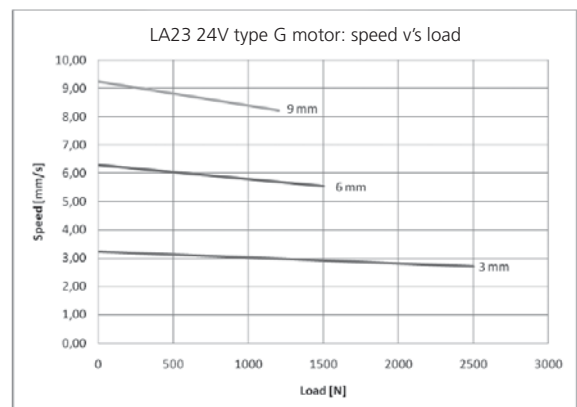
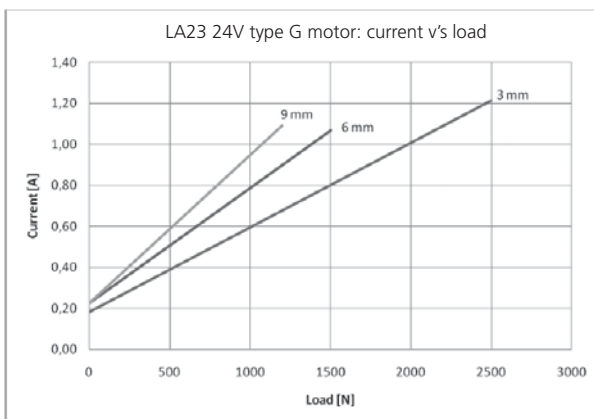
Speed, load and current curves: 12V motor - type A



24V motor type B – Battery drive (CBJC, CBJH, CBJ1/2 or wheelchairs)



24V motor type G – OpenBus control boxes (CB6S, CB16, CB20)



Terms of use

The user is responsible for determining the suitability of LINAK products for specific application. LINAK takes great care in providing accurate and up-to-date information on its products. However, due to continuous development in order to improve its products, LINAK products are subject to frequent modifications and changes without prior notice. Therefore, LINAK cannot guarantee the correct and actual status of said information on its products.

While LINAK uses its best efforts to fulfil orders, LINAK cannot, for the same reasons as mentioned above, guarantee the availability of any particular product. Therefore, LINAK reserves the right to discontinue the sale of any product displayed on its website or listed in its catalogues or other written material drawn up by LINAK.

All sales are subject to the Standard Terms of Sale and Delivery for LINAK. For a copy hereof, please contact LINAK.